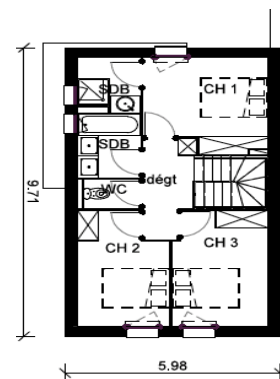
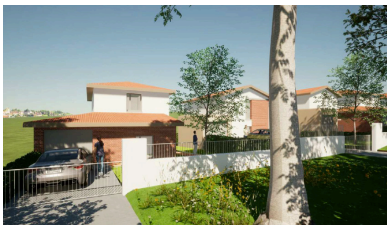


Villa T4

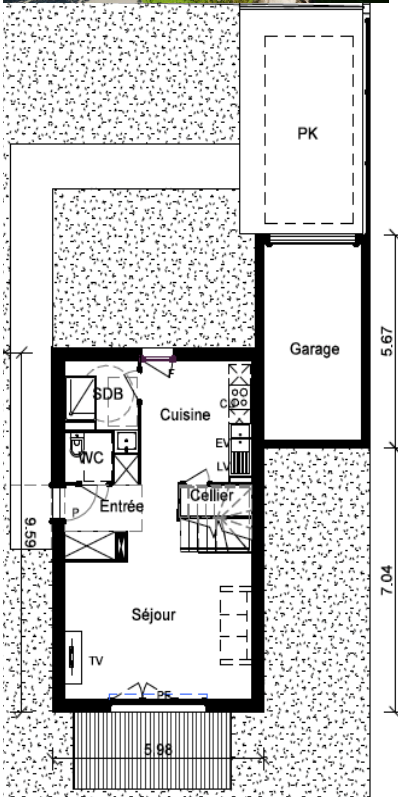
SURFACE HABITABLE 86,67 m²



Visite virtuelle
Scannez le QRcode



15



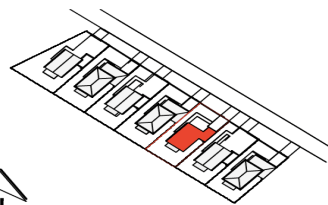
Terrasse 9 m²
Jardin privatif d' environ : 202 m²

Niveau RDC : 44,04m²

Séjour	21,09m ²
Cuisine	10,16m ²
Entrée	5,73m ²
Cellier	1,13m ²
WC	1,84m ²
SDB	4,09m ²

Villa T4

N° 3



Niveau 1er étage: 42,48m²

Chambre 1	10,31m ²
Chambre 2	9,17m ²
WC	1,57m ²
SDB	3,79m ²
Dégagement	4,44m ²
SDB	3,06m ²
Chambre 3	10,15m ²

Garage et 1 place de parking