

Villa T5

SURFACE HABITABLE 99.34 m²



Visite virtuelle
Scannez le QRcode

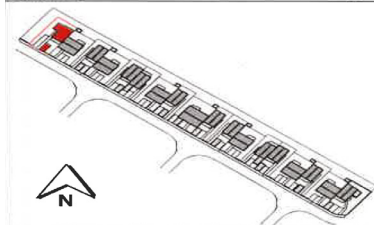


Terrasse 12 m²
Jardin privatif d' environ : 161 m²

Niveau RDC : 56,65m²

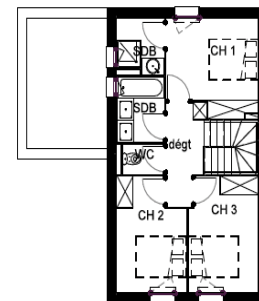
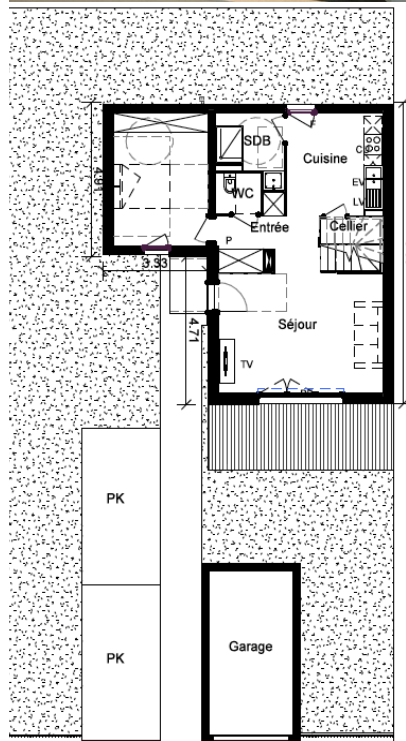
Séjour	21,03m ²
Cuisine	10,06m ²
Entrée	5,40m ²
Chambre	12,77m ²
Cellier	1,13m ²
WC	1,93m ²
SDB	4,33m ²

Villa T5 N° 1



Niveau 1er étage : 41,86m²

Chambre 1	10,22m ²
Chambre 2	9,04m ²
WC	1,57m ²
SDB	3,85m ²
Dégagement	4,44m ²
SDB	3,10m ²
Chambre 3	9,64m ²



Garage et 2 places de parking